



INSTITUT GUMÁRENSKÉ TECHNOLOGIE A TESTOVÁNÍ, A.S.  
RUBBER TECHNOLOGY AND TESTING INSTITUTE, Plc.  
INSTITUT FÜR GUMMITECHNOLOGIE UND PRÜFWESEN, A.G.  
A.O. «ИНСТИТУТ ТЕХНОЛОГИИ РЕЗИНЫ И ИСПЫТАНИЙ»

Společnost je zapsána v obchodním rejstříku vedeném Krajským soudem v Brně, oddíl B, vložka 818



PETLAS TYRE INDUSTRY  
AND TRADE COMPANY  
Göhlisar Mevkii  
40200 Kirsehir  
TURKEY

106 R - 0 0 0 3 8 1

Zlín 2<sup>nd</sup> December 2015

Re

Communication concerning the approval and notification of approval number

Enclosed you will find the Communication concerning the approval of your tyres according To ECE Regulation No. 106

On the base of this approval you are entitled to produce in your factory tyres of the dimension :

**STARMAXX TR-110**

with the approval number : **E8 106R-000381**

Sincerely yours



**Petr Husták, Ph.D.**  
**Tyre Approval Department Head**

## COMMUNICATION



**106R-000381**

issued by : Ministry of Transport  
L.Svobody 1222/12  
110 15 Praha 1  
Czech Republic

concerning: <sup>1/</sup>

### **APPROVAL GRANTED**

~~APPROVAL EXTENDED~~

~~APPROVAL REFUSED~~

~~APPROVAL WITHDRAWN~~

~~PRODUCTION DEFINITELY DISCONTINUED~~

**of a type of pneumatic tyre for agricultural vehicles pursuant to Regulation No. 106**

Approval No.: **106R-000381**

Extension No. : **N/A**

1. Manufacturer's name or trade mark (s) of the tyre: **STARMAXX**
2. Tyre type designation by the manufacturer: **TR-110**
3. Manufacturer's name and address: **PETLAS TYRE INDUSTRY  
AND TRADE COMPANY  
Göhlhisar Mevkii  
40200 Kirsehir  
TURKEY**
4. If applicable, name and address of manufacturer's representative: **N/A**
5. Summarized description:
  - 5.1. Size of tyre: **see tyre dimensions list**
  - 5.2. Category of use: **Tractor - Drive wheel - standard tread**
  - 5.3. Structure: ~~diagonal (bias-ply)/bias belted~~ **radial** <sup>1/</sup>
  - 5.4. Speed category symbol: **A8**
  - 5.5. Load-capacity index: **see tyre dimensions list**
    - 5.5.1. for traction (implement only): **-**
    - 5.5.2. for trailer (implement only): **-**



5.6. Whether the tyre is to be fitted with or without an inner tube ~~TUBE TYPE~~ / TUBELESS

5.7. The supplementary service description, if applicable: -

6. Technical Service and, where applicable,  
test laboratory approved for purposes  
of approval or of verification of conformity:

IGTT a.s.  
Šternberská 446, Louky,  
763 02 ZLÍN  
CZECH REPUBLIC

7. Date of report issued by that service: 02.12.2015

8. Number of report issued by that service: 106/0380

9. Reason(s) of extension (if applicable): -

10. Any remarks: -

11. Place: Praha

12. Date: 02.12.2015

13. Signature:

Marek Brázda

14. Annexed to this communication is a list of documents in the approval file deposited at the Administrative Services having delivered the approval and which can be obtained upon request

List of attached documents

- Manufacturer's certificate
- Sidewall marking, tread pattern
- Tread pattern
- Request for approval



---

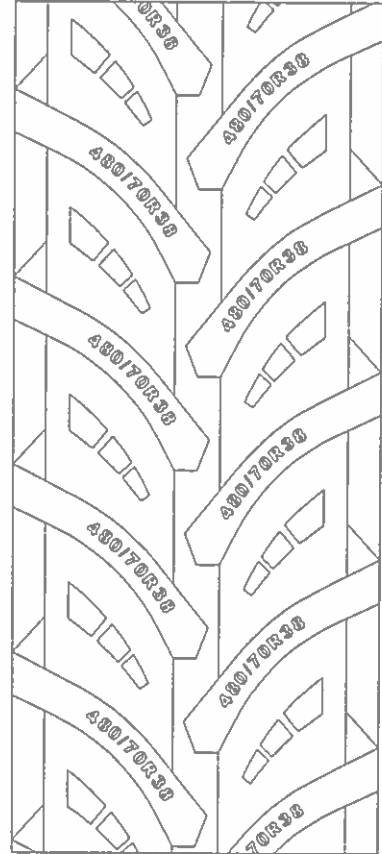
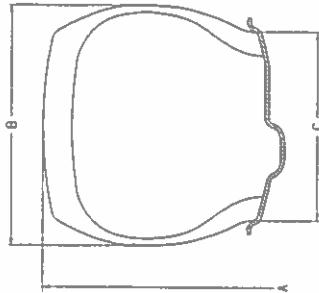
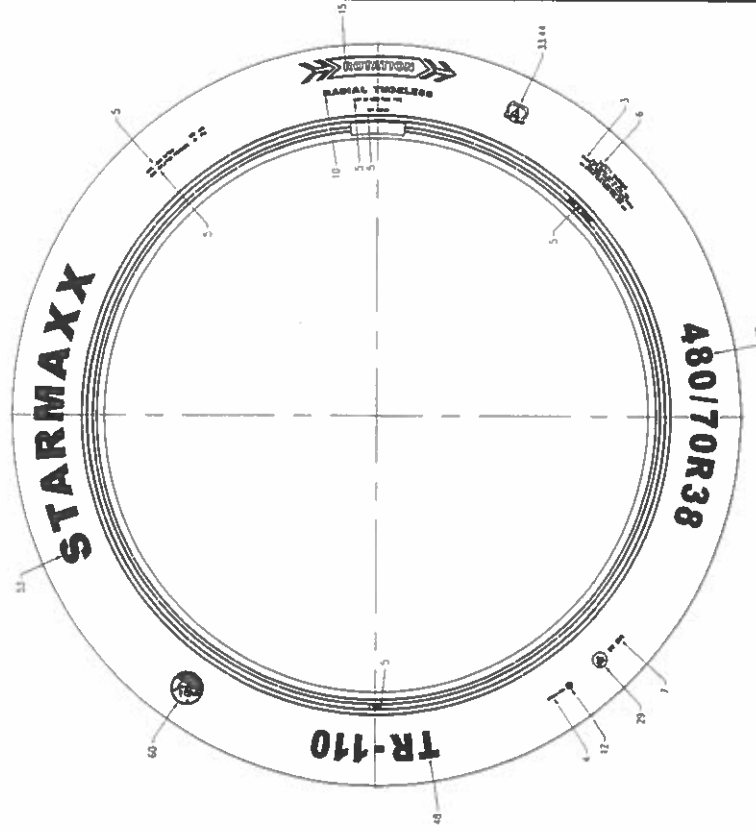
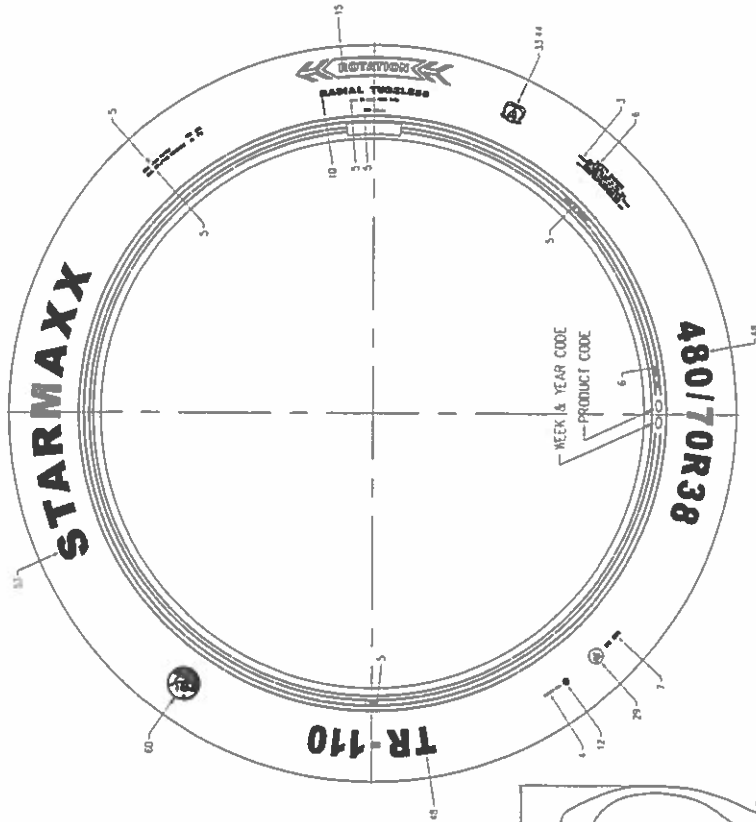
<sup>1/</sup> Strike out what does not apply.

# Annex No.1

## Tyre dimensions list from the same range

200/70 R16 TR-110 TL 94 A8	106R-000381
240/70 R16 TR-110 TL 104 A8	
260/70 R16 TR-110 TL 109 A8	
260/70 R20 TR-110 TL 113 A8	
280/70 R16 TR-110 TL 112 A8	
280/70 R18 TR-110 TL 114 A8	
280/70 R20 TR-110 TL 116 A8	
300/70 R20 TR-110 TL 110 A8	
320/70 R20 TR-110 TL 113 A8	
320/70 R24 TR-110 TL 116 A8	
320/70 R28 TR-110 TL 119 A8	
360/70 R20 TR-110 TL 120 A8	
360/70 R24 TR-110 TL 122 A8	
360/70 R28 TR-110 TL 125 A8	
380/70 R20 TR-110 TL 132 A8	
380/70 R24 TR-110 TL 125 A8	
380/70 R28 TR-110 TL 127 A8	
420/70 R24 TR-110 TL 130 A8	
420/70 R28 TR-110 TL 133 A8	
420/70 R30 TR-110 TL 134 A8	
480/70 R24 TR-110 TL 138 A8	
480/70 R26 TR-110 TL 139 A8	
480/70 R28 TR-110 TL 140 A8	
480/70 R30 TR-110 TL 141 A8	
480/70 R34 TR-110 TL 143 A8	
480/70 R38 TR-110 TL 145 A8 (WC TYRE)	
520/70 R30 TR-110 TL 145 A8	
520/70 R34 TR-110 TL 148 A8	
520/70 R38 TR-110 TL 150 A8	
580/70 R38 TR-110 TL 155 A8	
580/70 R42 TR-110 TL 158 A8	





AB	480/70R38	145	X	X	1681	479	15.00	000381	-
AB	480/70R38	145	X	X	1681	479	15.00	000381	-
HZ SHRT (SPEED CAT.)	LASTR EBADI (TIRE SIZE)	YUK KAPASITE ROCKS (LOAD CAP. INDEX)	TP (TYPE)	TP (TYPE)	A	B	C	ONAY NO. (APPROVAL NO.)	ADKLAMA (REMARKS)
					mm	mm	mm	mm	

SRT DESGN (TREAD PATTERN)		TR-110	
SRT (TREAD)		TARH (DATE)	14.12.2015
YANAK (SIDEWALL)		RESM NO. (DRAWING NO.)	PKT-12326-A
		KONTROL (CHECKED)	
		RESM LAM	